

**PRELIMINARY CONDOMINIUM PLAT OF
CANOPY HILL**

Part of the Southeast 1/4 of the Southeast 1/4 of Section 19 and the Northeast 1/4 of the Northeast 1/4 of Section 30, all in Township 3 North, Range 21 East, Village of Union Grove, Racine County, Wisconsin

SURVEYOR'S CERTIFICATE

STATE OF WISCONSIN)
WAUKESHA COUNTY) SS

I, John P. Konopacki, Professional Land Surveyor, do hereby certify that I have surveyed and mapped the lands shown and described hereon and that this is a true and correct representation of CANOPY HILL, a condominium and that the identification and location of each unit and the common elements can be determined from this plat.

SIGNED
JOHN P. KONOPACKI, PROFESSIONAL LAND SURVEYOR S-2461

 - INDICATES LIMITED COMMON ELEMENTS

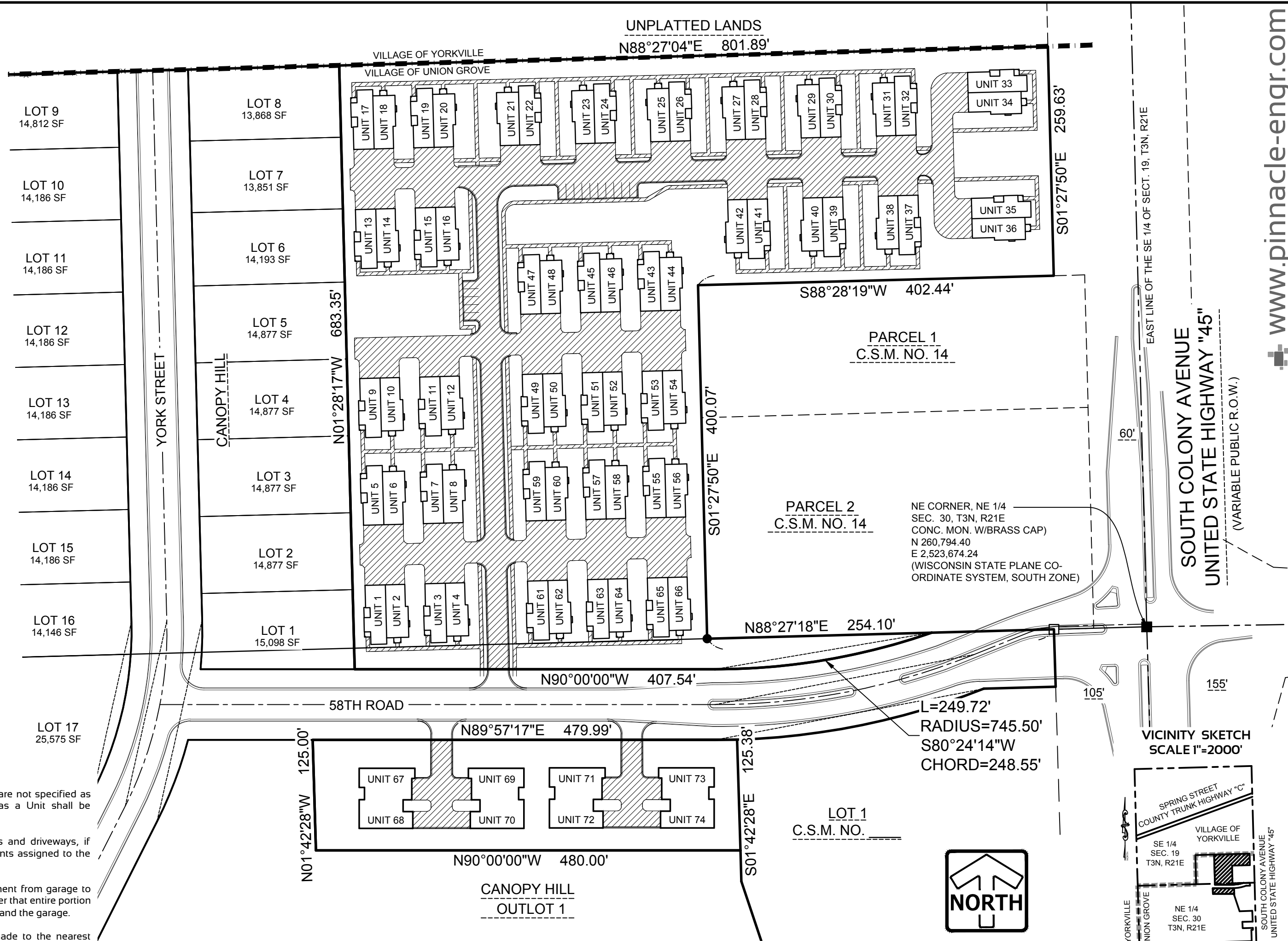
REGISTER OF DEEDS

NOTES:

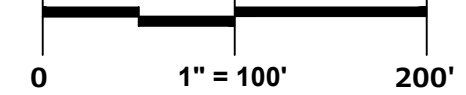
- All portions of the property that are not specified as Limited Common Elements or as a Unit shall be considered a Common Element.
- Stoops, patios, sidewalks, decks and driveways, if any, are Limited Common Elements assigned to the Unit(s) they service.
- Length of Limited Common Element from garage to curb varies and is intended to cover that entire portion of the driveway between the curb and the garage.
- All measurements have been made to the nearest one-hundredth of a foot.
- All angular measurements have been made to the nearest one second.

This instrument drafted by John P. Konopacki, PLS-Registration No. S-2461

PINNACLE ENGINEERING GROUP

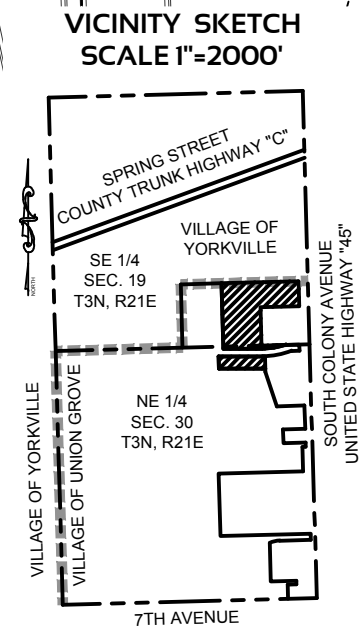


GRAPHICAL SCALE (FEET)



Prepared by:
PINNACLE ENGINEERING GROUP
20725 WATERTOWN ROAD | SUITE 100
BROOKFIELD, WI 53186
OFFICE: (262) 754-8888

Prepared for:
Newport Group, LTD
8338 Corporate Drive, Suite 300
Mt. Pleasant, WI 53406



PEG JOB#959.00
SHEET 1 OF 1